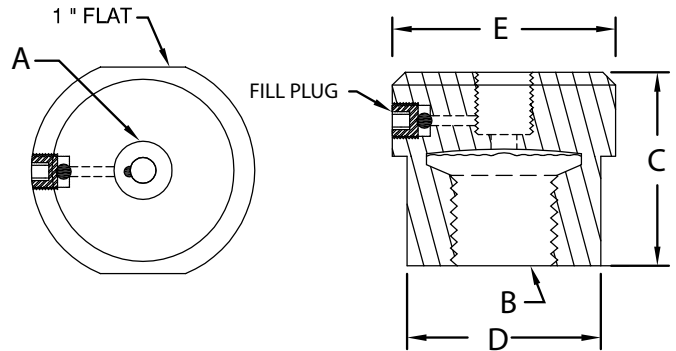


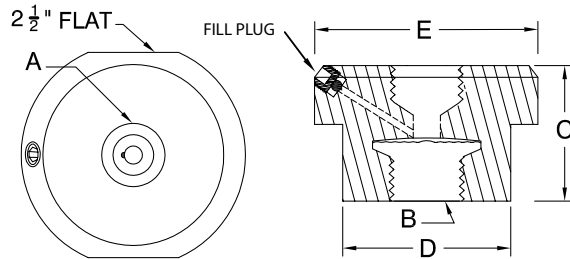
MINI DIAPHRAGM SEALS MODELS MD175, MD250 AND MD250LP



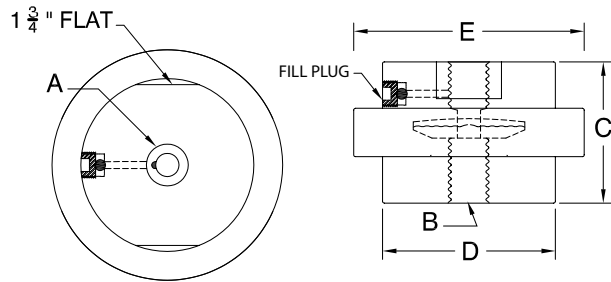
Illustrated model: MD175



Illustrated model: MD250



Illustrated model: MD250LP



Specifications

Housing:	1 piece 316 stainless steel
Diaphragm:	Welded 316 stainless steel
Operating pressure:	From -30 to 60 psi use MD250LP, for 60 psi and up or equivalence use model MD175 or MD250
Process connection:	1/4, 1/2, 3/4, 1 in nptf (1 in available only with MD250 and MD250LP)
Instrument connection:	1/4 in or 1/2 in nptf
Compliance:	Diaphragm seal standard ASME B40.2

Applications

The mini diaphragm seal is an economical method to prevent corrosive and viscous process media from clogging or solidifying the internals of the instrument.

MINI DIAPHRAGM SEALS (CONTINUED)
MODELS MD175, MD250 AND MD250LP
 To order, use the code in the corresponding column

Dimensions as per diagram										
A Instrument connection	B Process connection	Code	C	D	E	Product code				
MD175										
¼ in nptf	¼ in nptf	01	1.5 in (38.1 mm)		1.73 in (43.9 mm)	MD175-01				
	½ in nptf	02				MD175-02				
½ in nptf	½ in nptf	05				MD175-05				
	¾ in nptf	06				MD175-06				
MD250 et MD250LP										
¼ in nptf	¼ in nptf	01				1.5 in (38.1 mm)	1.86 in (47.2 mm)	2.5 in (63 mm)	MD250-01	
	½ in nptf	02	MD250-02LP							
	1 in nptf	04	MD250-04LP							
½ in nptf	½ in nptf	05	MD250-05LP							
	1 in nptf	07	MD250-07							

IMPORTANT: For pressure lower than 60 psi (400kPa) use only series MD250LP

Always indicate the type of assembly / filling desired:

TYPE OF ASSEMBLING AND FILLING	
Product code	Description
FIL-GD	Glycerin 32 to 160°F / 0 to 70°C
FIL-GWD	Glycerin / water (standard) -40 to 160°F / -40 to 70°C
FIL-SID	Silicone DC200 1,000 CS -40 to 400°F / -40 to 200°C
FIL-SIHD	Silicone high temperature -70 to 600°F / -56 to 315°C
FIL-FL-FS5D	Fluorolube FS5 -50 to 500°F / -45 to 260°C